



*Network of Callan Services For Persons with Disabilities in Papua New Guinea*

# INSIGHT

**Volume 3, Issue No 4**

**Circulation Date: 9th December, 2015**

## *Editorial*

*Muscular Dystrophy*

*Maureen in Kiunga*

*Optical in Kiunga*

*Rugby skills in Buka*

*Outreach at Finchafen*

*Network photo hub*



### **Editing, Layout and Design:**

Callan Services for Persons with Disabilities—National Unit (CSNU)

**Production:** CSNU

**Circulation:** Volume 3, Issue 4

**Photo:** Three siblings were screened and confirmed to be low vision clients at Pockango village in the Yabinmape Local level Government, Finchafen District, Morobe Province. From Left to Right: Eunice Nomuneri, Samuel Nomuneri and Metusela Nomunera

## *Respect, Presence, Compassion, Justice*

Callan Services National Unit

P O Box 706

Wewak

East Sepik Province

Phone Number: 456 3412

Fax: 456 2924

Email: [csnuadmin@global.net.pg/director-callanservices@edmundrice.org](mailto:csnuadmin@global.net.pg/director-callanservices@edmundrice.org)



*Supported by funds from: Christian Brothers Oceania Province, Edmund Rice Foundation Australia, Australian Government, CBM-NZAid, DKA Austria, Light for the World, Government of PNG*

INSIGHT is the Network of Callan Services for Persons with Disabilities quarterly newsletter.

The newsletter is about inspiring, sharing and advocating on behalf of Special Education Resource Centres (SERCs) and the services that are provided by SERCs.

Through these kinds of work we reach out to the remote parts of PNG. Callan Services is present in 17 provinces. They are: Aitape, Vaimo, Wewak, Madang, Morobe, Goroka, Mingende (Simbu province), Wabag, Mendi, Hagen, Rabaul, Kavieng, Manus, Kimbe, Buka, Daru, Kiunga and Gerehu in Port Moresby.

We would be grateful to receive your comments about our services should you require additional information.

Forward your enquiries to [brucehikins@gmail.com](mailto:brucehikins@gmail.com) for further information regarding Callan Services for Persons with Disabilities.

## *The Network of Callan Services within*

### *Editorial*

Hello everyone and welcome back to the forth quarter newsletter of the Network of Callan Services for Persons with Disabilities across Papua New Guinea (PNG).

As I was trying to find an angle to write the introduction of this newsletter, a thought came to mind—to use more pictures than words within. I must say this is a slight change to the structure and layout of the newsletter. Some of these pictures will tell you about how successful we are as a Network, others about our failures, challenges and risks. These risks come about if we don't calculate properly the number of challenges. For instance if we are climbing valleys and mountains or crossing rivers and oceans to arrive at a place where few persons with disabilities and children with special needs can receive a service. For instance, recently few colleagues of mine and I climbed a 13 mountain journey (if my calculation is not going to surprise those who took this trip with me ) to finally land at Pockango, a village set in the wilderness of Yabinmape Local Level Government area in the inland of Finschafen district in the Morobe Province of PNG. This experience is only 'the tip of the ice bag'. There are experiences more challenging than this one I mentioned. These experiences only tell us about the passion staff members and volunteers (those that voluntarily give their time without paid time) have for the work of Callan Services. If you are one of these people, I know that you will be remembered 'somewhere some day.'

The Network of Callan Services starts from where I am writing in Wewak, East Sepik Province linking over 19 provinces of PNG with the exception of four provinces—Oro Province, Hela Province, Central and Gulf Province.

The Network delivers special education and community based rehabilitation services (CBR) to children and persons with disabilities through two main avenues—special education and CBR. These programs encourage staff members to go out of their 'Clifton zone' into rural communities, sometimes into the wild. Teaching children with disabilities and helping them to learn skills to develop their abilities beyond the challenges of their disability are important parts of the centre-based programs. Referrals to the main hospitals and ongoing support in child care and safety areas are also part of the total inclusive education and CBR across the Network.

The Network is now 25 years old and continues to work beyond its expectations and challenges. Challenges often beyond its strength and limitations. As in the words of Brother Kevin Ryan the Director of Callan Services National Unit in one of his address to a group of Callan staff members and families before leaving for holiday in Perth Western Australia brings to mind of some these challenges. A family member paraphrased the words of Brother Kevin— "The strength of the Network is within. No one from outside will break this Network. Only the people within The Network will break the Network if we fail to live up to our values". Yes, you and i. We need to bring out our best.

It is my wish that you will take time to ponder these words of wisdom with friends, families and loved ones during this Christmas and New Year season. If you will, I can only imagine one thing—that we will grow with plenty of respect, presence, compassion and justice.

To our sponsors, supporters and partners, congratulations and thank you for your support. We look forward to another successful year in 2016.

Patrick Hikin

Editor

### **Muscular Dystrophy revealed in 5 villages in Finschafen, Morobe**



**Photo: Lucy Aupong, Callan Services National Physiotherapist (right) demonstrating basic exercises for persons experiencing muscular dystrophy. Onlookers are villagers from the Tami island**

Anyone who has been to Finschafen will go away with two simple facts. Firstly the long, wide and ever continuing Morobe coastline which host some of the famous sites in Morobe province such as the mouth of the Wara Busu River. In sum, the coast itself carries the Districts of Finschafen and Kabum. Secondly, the mixed subsistence economy driven by fishing and gardening as two main source for survival for its populous. On the 14th of November 2015, the Callan Services National Training Services team (from within CSNU) had planned a trip to Finschafen District. Lucy Aupong, National Trainer Physiotherapy had put up a plan to investigate a type of a disease which was suspected to be affecting hundreds of families, men and women, children in many villages of Finschafen District. The disease which is known as Muscular Dystrophy has had major impact on a good number of men and boys by disabling their ability to perform gardening and fishing for their survival. The few I saw had home made wheel chairs. Many of these people who don't have access to a wheel chair survive with support from their immediate families. They are supported with home made bars built by their family members to help them move from where they sleep to a toilet and or shower. Life is not just easy for these kinds of persons with such a disability.

Callan Services National Unit (CSNU) together with Morobe Special Education Resource Centre (SERC) set off on a mission to find more about the disease. Macular Dystrophy gradually makes the body weaker: walking, digging, lifting and other mobility matters become more difficult. The research, screening and awareness team which comprised 2 physiotherapist, 2 eye and ear specialists started work on the sites from 16th to the 20th of November, 2015.

For more related stories, please contact Lucy Aupong on this email address: [amioaupong@gmail.com](mailto:amioaupong@gmail.com)



## *News from Resource Centers*

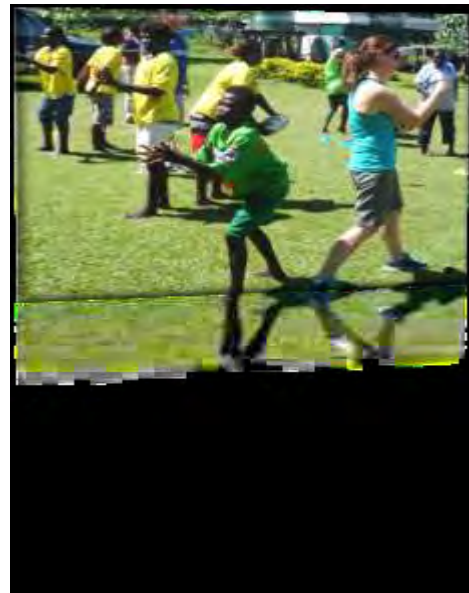


Callan SERC Kiunga organises picnics every year to take clients out to different locations for fun, socialisation and enjoyment. Maureen is enjoying every moment of her time beside the Fly River. She feeds herself, draws, writes, claps, picks up things, etc. by using her toes. Her feet are as good as her hands. An example of a success story. For related information, please contact Doris Amboman on this email address: [callankiunga@gmail.com](mailto:callankiunga@gmail.com)



Billy Saitore from Callan Optical Services Goroka workshop has given three (3) weeks lens cutting training to Cornelius Cosmas eye care nurse at Kiunga SERC. Kiunga now has a new optical workshop in the Callan Network. Any centre, organisation or individual can find out about how to obtain ready-made or prescription glasses or order glasses by contacting Kenneth Hasinfangu at Callan Optical Services in Goroka ([callanoptical@global.net.pg](mailto:callanoptical@global.net.pg) or 532 3205)

## News from Resource Centers



**Callan SERC staff members and special needs children received Rugby League skills from the Australian NRL Pacific Program Team and Representatives in Buka.**

The Pacific Program Manager Mr. John Wilson and the Team from Australia arrived in Buka on Tuesday 10th November for a visit to Callan Resource Centre. Mr. Wilson said this visit was not just the presentation of rugby league skills and the sporting materials. We are here purposely work closely to find ways in improving and developing the Callan Services with building facilities for children to use. The students with special needs participated and responded positively during the skills presentation with their the help from SERC staff members. The children were presented with gifts by the Australian NRL Team for their participation.

The Program Manager stated, "I can't express how inspired I am to see the interpreters relaying messages using sign language and the kids' positive response," said Mr Wilson.

SERC Coordinator, Mr. Blaise Semoso thanked the Pacific Program and Mr. John Wilson and the team for their support and recognition of the SERC in Buka and said they were looking forward in working in partnership in years to come.

More details with Josepha Biom at [josephabiom94.jb@gmail.com](mailto:josephabiom94.jb@gmail.com)

## *News from Resource Centers*



**Photo:** Left to Right: Staff members of Morobe Special Education Resource Centre (SERC) and Callan Services National Unit National Health and Training Services set off on a 23 footer banana boat for a survey at Tami Island, Finchafen District in the Morobe Province, PNG.

Far left: George Lalaoia (Coordinator of Morobe SERC), second far right Lucy Aupong (CSNU Physiotherapist), far right Jeff (CSNU eye specialist based in the Callan Optical clinic at Morobe SERC, Lae), Morobe and other members of the survey and screening team.

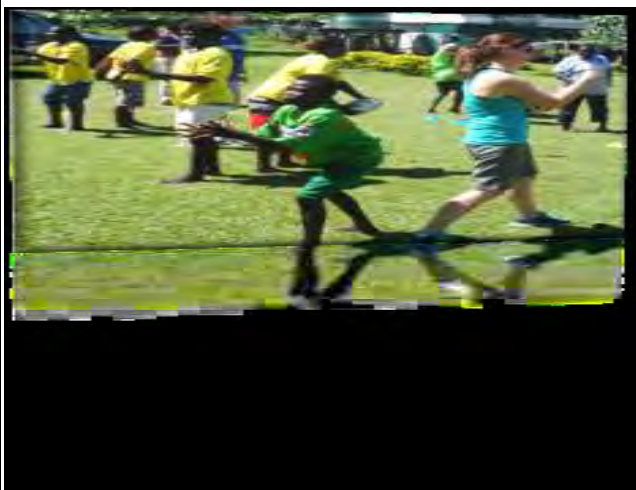




**Picture:** Dr Daile Elijah doing an ear screening of a child at Finschafen District during a visit from Callan Services



**Picture: Left:** John Kaisek, Principal of Callan Studies National Institute and Vero Kave (**Centre**), coordinator of Wewak SERC presenting a gift to Ms Jennifer Tamarua during the farewell dinner. Jennifer served as superintendent of Special Education Unit for 25 years at her resignation.



**Photo:** Staffs and students from Buka SERC receiving a training from a team from Australia during a visit to BUKA SERC



**Photo:** Dolly Appollo (left), Lucy Aupong (right), the two physiotherapists discussing with Raemeng Sifumac and assistants about the genealogy of the Muscular Dystrophy and how its spreads and affects families in Finschafen



**Photo:** Jeff from Callan Optical conducting an eye check on a client at Finschafen during a visit from Callan Services



**Photo:** Lucy Aupong (Callan Services Physiotherapist) conducting a physical examination on a child at Temi Island during a visit from Callan Services in Finschafen, Morobe